



MORGAN ASSOCIATES

ESTATE & LETTINGS AGENCY

26 Sandford Court

Humphris Place, Cheltenham GL53 7FA

£1,550 PCM



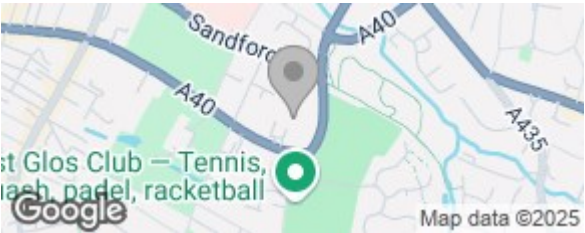
26 Sandford Court, Humphris Place, Cheltenham, GL53 7FA

We are pleased to offer this contemporary second floor apartment which is located within one of Cheltenham`s most prestigious developments within the grounds of the historic Thirlestaine Hall, just a short distance from central Cheltenham. The apartment is offered on an unfurnished basis and consists of two double bedrooms - each with built in storage and contemporary en-suite shower room to the master bedroom, additional bathroom with shower over the bath, large sitting / dining room with doors onto the balcony and newly fitted kitchen with integrated appliances. Externally the property benefits from two allocated off road parking spaces within the gated car park and use of the beautifully maintained gardens. The property is warmed by gas fired under floor heating throughout.

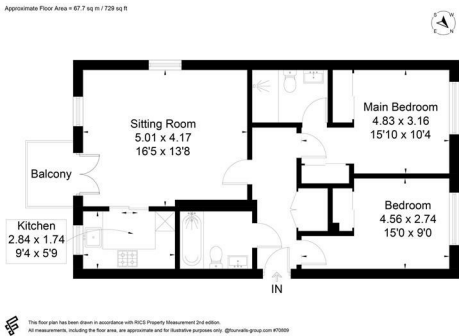


These particulars, whilst believed to be accurate are set out as a general outline only for guidance and do not constitute any part of an offer or contract. Intending purchasers should not rely on them as statements of representation of fact, but must satisfy themselves by inspection or otherwise as to their accuracy. No person in this firms employment has the authority to make or give any representation or warranty in respect of the property.

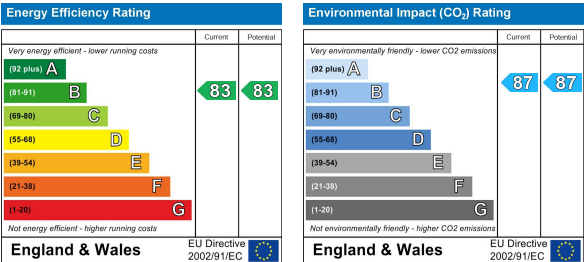
Area Map



Floor Plan



Energy Efficiency Graph



Rotunda Buildings Montpellier Exchange
Cheltenham
Gloucestershire
GL50 1SJ

T. 01242 514 285
E. info@morgan-associates.co.uk
W. www.morgan-associates.co.uk